

Invest in Nature

Developing a tool for
efficient monitoring,
reporting & verification
of biodiversity change at
property-scale



PLC23 October 2023

Campbell's

CONDENSED
TOMATO SOUP

REG. U.S. PAT. OFF.

DIRECTIONS: Empty soup into pan. Stir in 1 can of water. Heat to boiling, stirring occasionally. Makes about 2½ cups of soup.

CREAM OF TOMATO SOUP: Prepare as above using milk or cream instead of water.

TOMATO SAUCE: Empty soup into pan. Add a little water, if desired. Heat, stirring occasionally. May be seasoned with prepared mustard, horseradish, Worcestershire or herbs. Serve on hamburgers, pork chops, fish, etc. Makes about 1¼ cups of sauce.

10¾ OZ. NET WEIGHT
305 GRAMS

Prepared from Tomatoes, Enriched Wheat Flour, Vegetable Oil, Onions, Butter, Salt, Sugar, Natural Seasonings and Vitamin C.

MADE BY

CAMPBELL SOUP COMPANY
GENERAL OFFICES, CAMDEN, N.J., U.S.A.

**RECIPE
IDEA!**

SPREAD-A-BURGER

- 1½ lb. ground beef
- 1 can Campbell's Tomato Soup
- ½ cup finely chopped onion
- 1 tbsp. prepared mustard
- 1 tbsp. Worcestershire
- 1 tsp. prepared horseradish
- 1 tsp. salt
- Dash pepper
- 6 frankfurter buns, split and toasted

Thoroughly mix beef, soup, onion, and seasonings. Spread mixture evenly over bun halves; cover edges completely. Broil about 4 inches from heat for 12 to 15 minutes. Makes 6 open-face sandwiches.

Campbell's

CONDENSED

NET WT.



10¾ OZ.

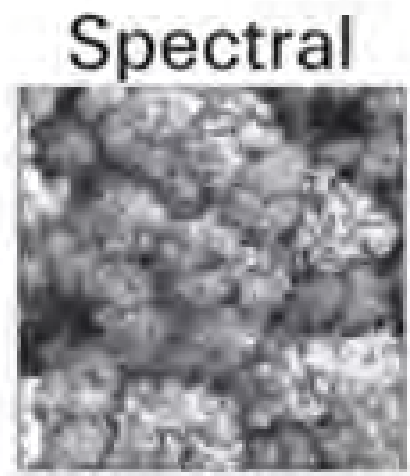
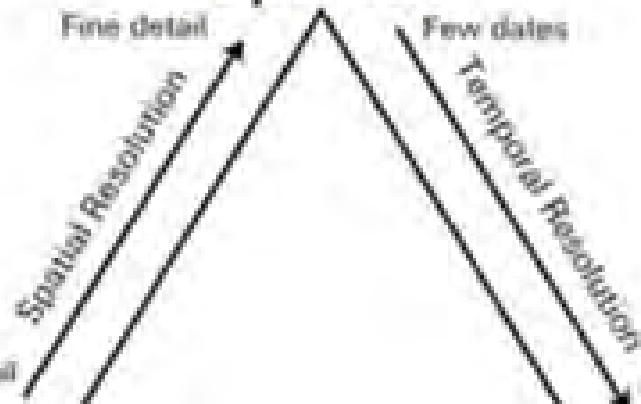
TOMATO

SOUP

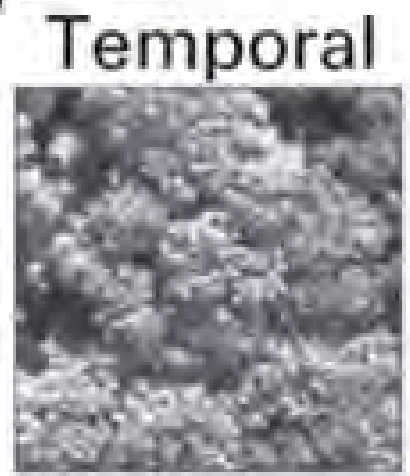




Spatial

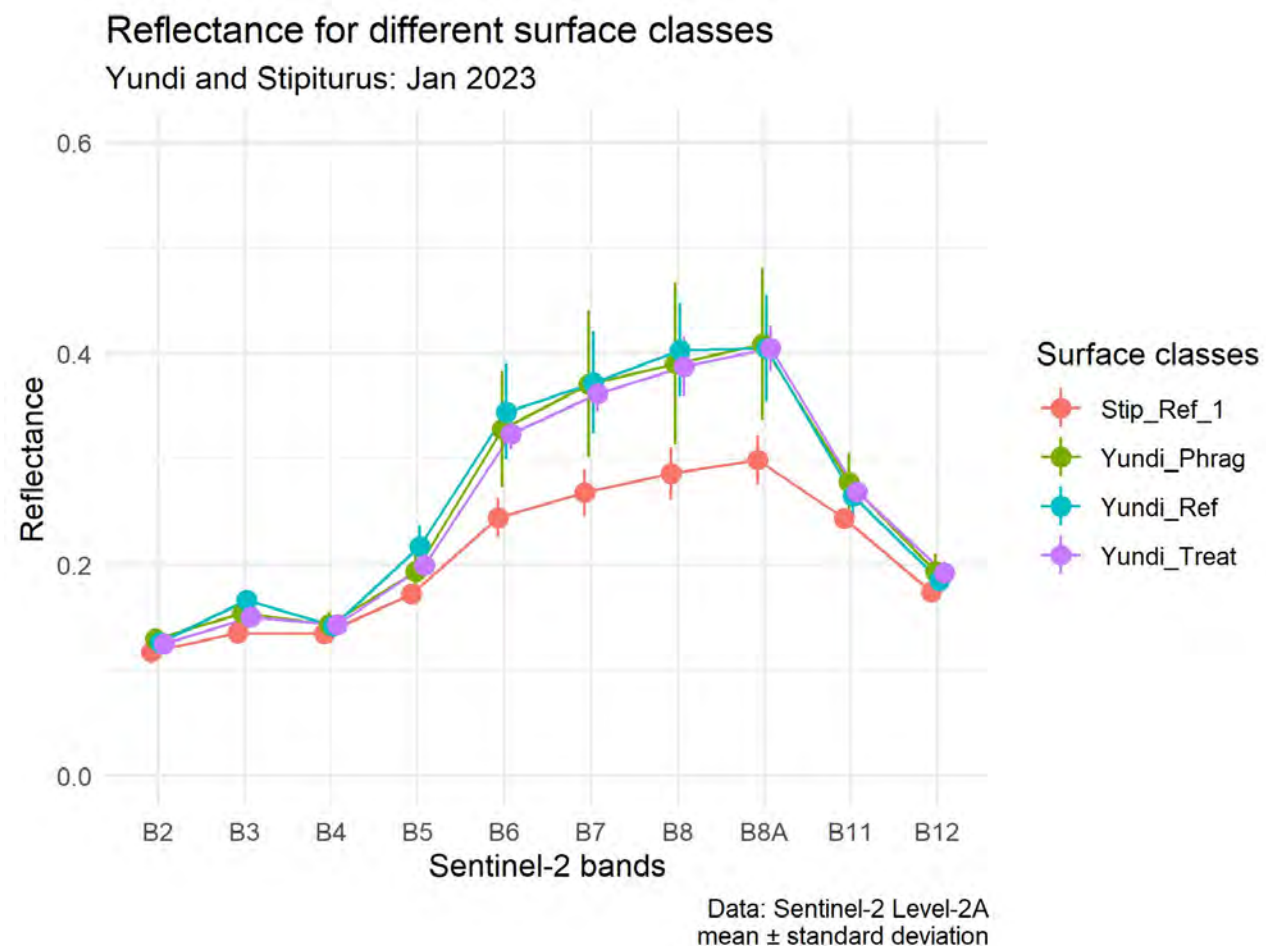


Multispectral Composite

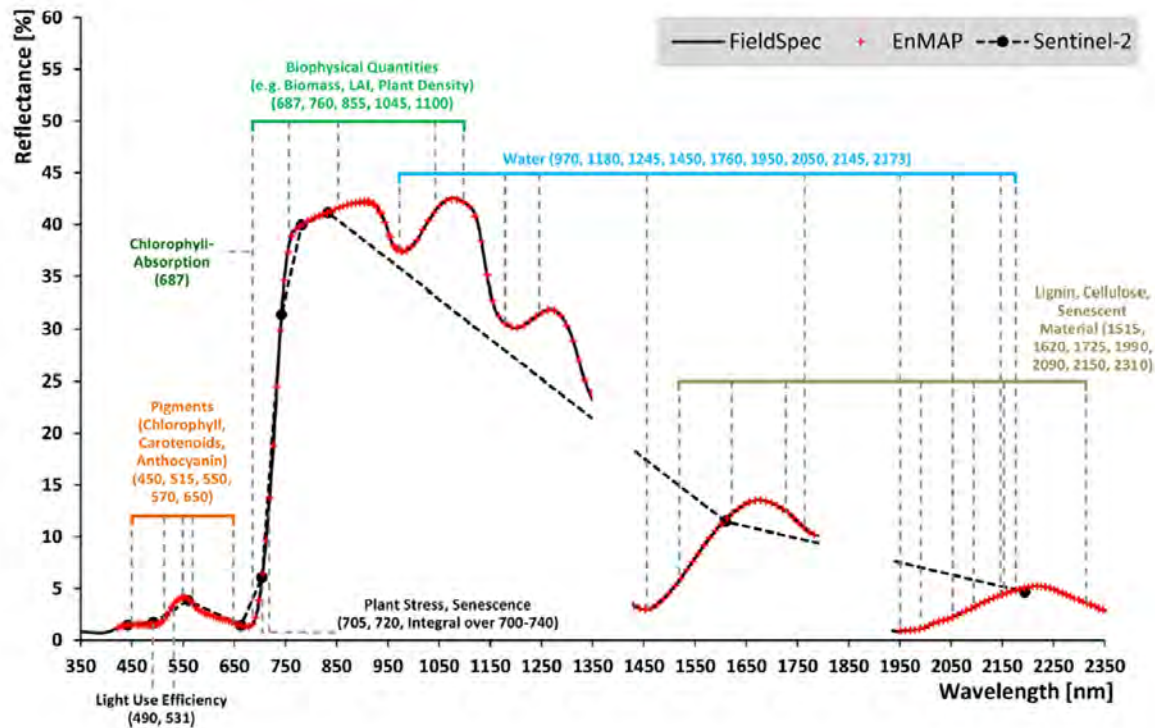


Multi-date Composite

Distinguishes between different habitats

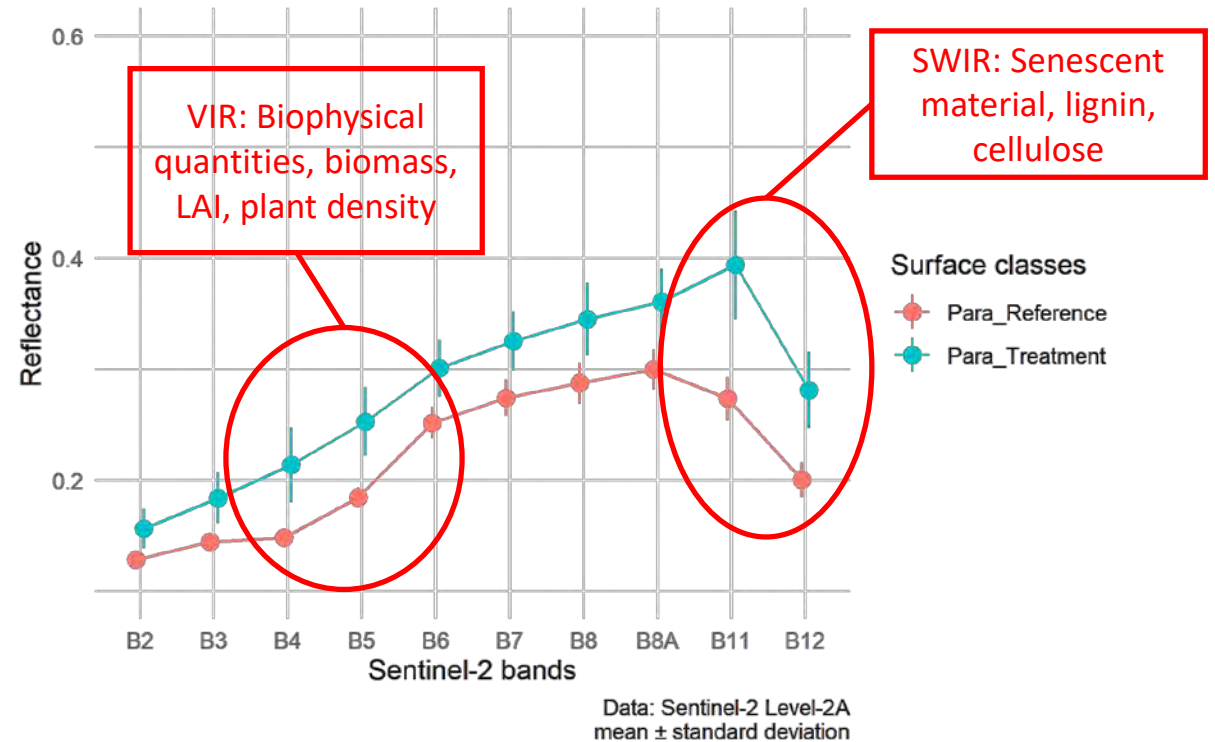


Covers wide range of reflectances – from Band 2 ~500nm to Band 12 ~2200nm

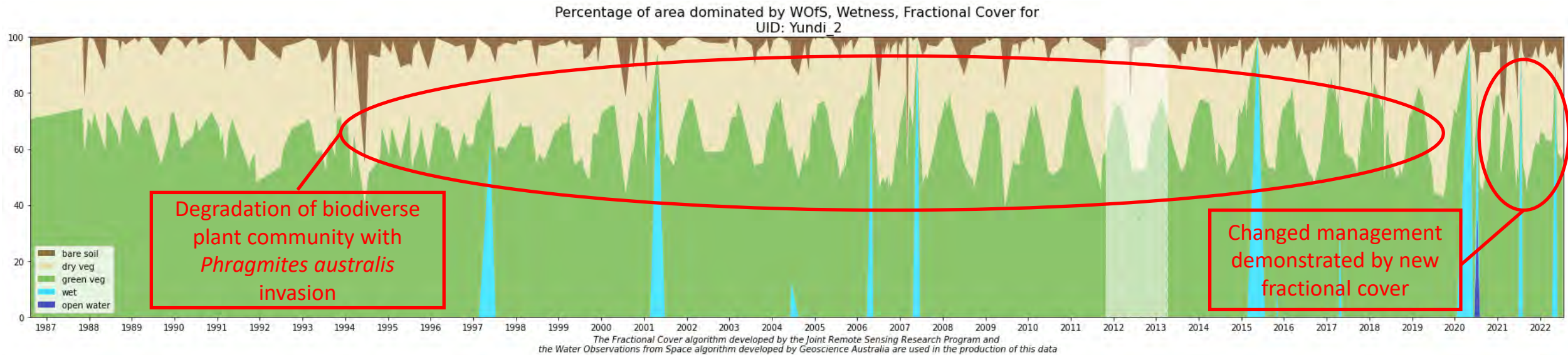


Reflectance for different surface classes

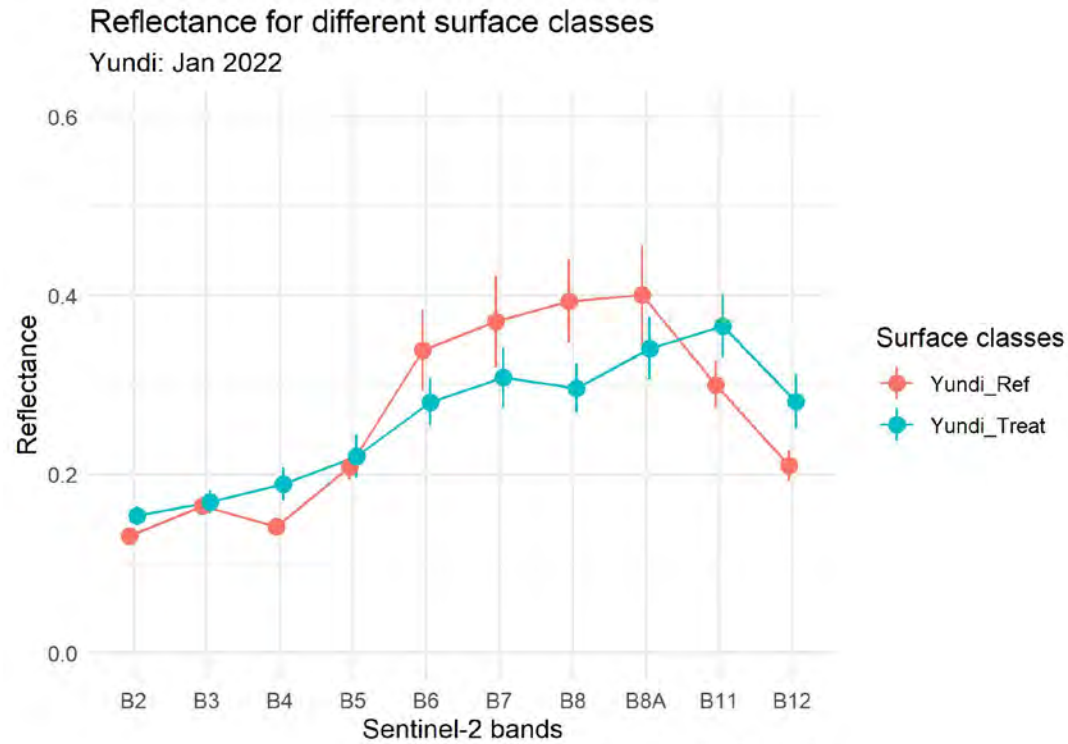
Para: Jan 2023



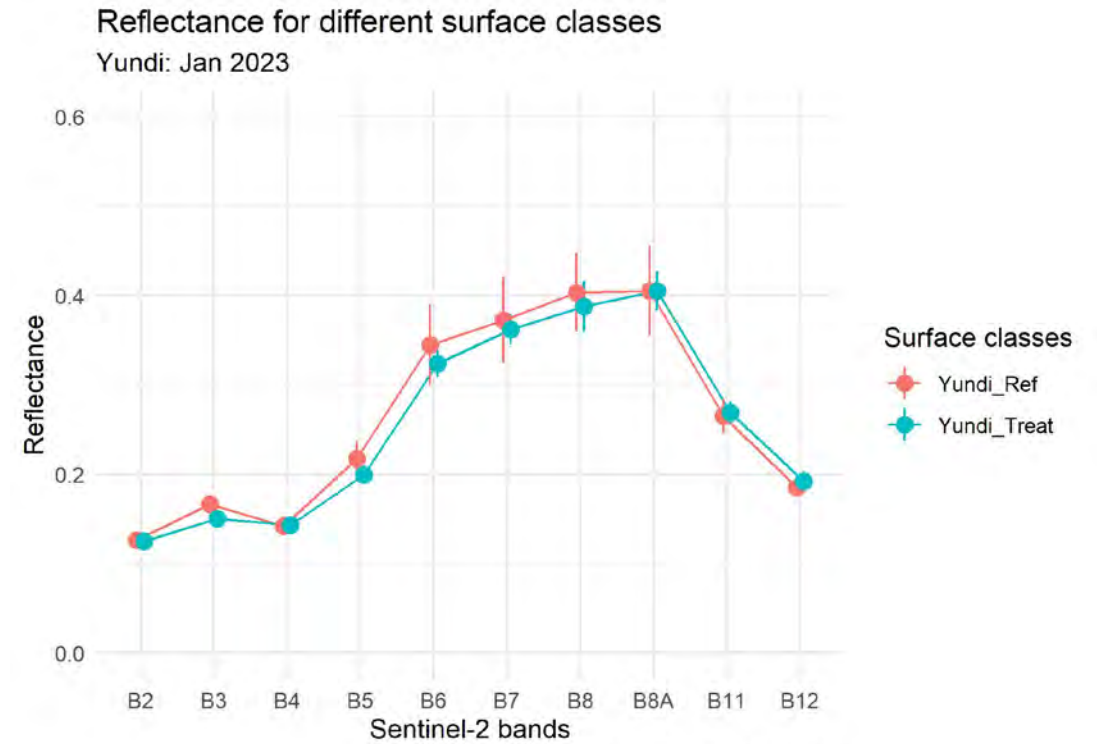
Complements other tools to demonstrate additionality



Demonstrates tangible change over time to give market confidence that nature is being repaired



Data: Sentinel-2 Level-2A
mean \pm standard deviation



Data: Sentinel-2 Level-2A
mean \pm standard deviation





Campbell's

CONDENSED

INGREDIENTS:
Surveys, ecological assessments, restoration planning and activities, on-going maintenance, some luck and rain.

Campbell's

CONDENSED

METHODS:
Removal of threatening processes; restoration of plant communities; creating animal habitat; maintaining ecological function; monitoring, reporting and verification.



NATURE REPAIR SOUP



NATURE REPAIR SOUP

Made by Campbell's Soup Co
General Office, NJ, USA
Made under contract for



www.PaintSewGlueChew.com



YUUNDI

NATURE CONSERVANCY

John Fargher – j.d.fargher@internode.on.net

Chris Auricht – chris@Auricht.com.au